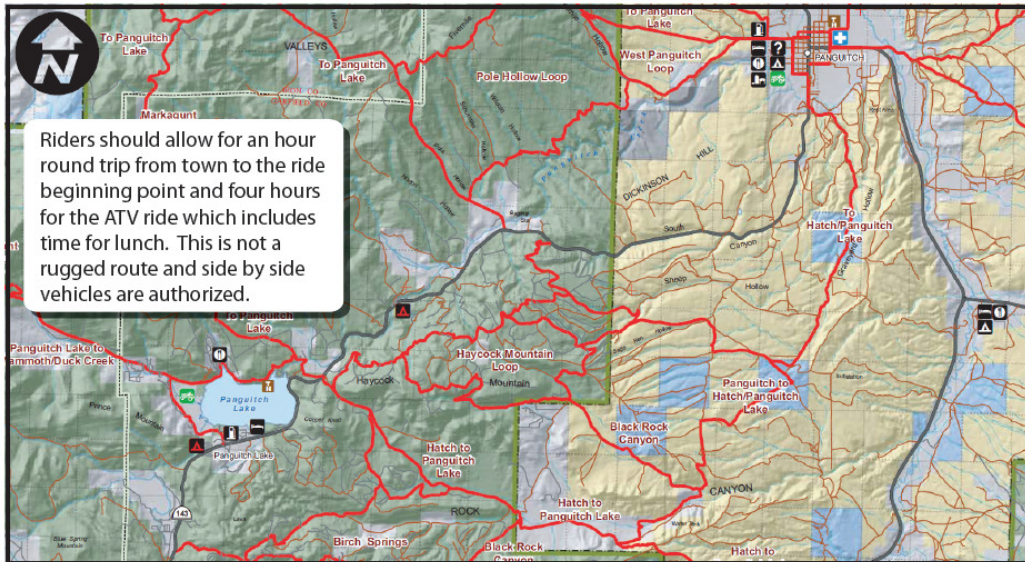


Trail #5 Pass Creek Loop



Ride Info

Length: 30 miles

Time: 4 hours

Rider Skill Level: Easy



Riders will trailer ATV's up SR 143 (Panguitch Lake Road) to the Hatch Mountain turnoff near Panguitch Lake. Parking is located about half a mile East of the Panguitch Lake Road.

This scenic 27 mile route travels across sagebrush flats, into pine and quaking aspen forests and next to lava beds. There are numerous places to stop and survey the beauty along the way. This is a very dusty trail, so goggles, a bandana for your face, and plenty of water to drink is encouraged.